

Rap2A+Rap2B+Rap2C Rabbit mAb [1X3F]

Cat NO. :A72653

Information:

Applications	Reactivity:	UniProt ID:	MW(kDa)	Host	Isotype	Size
WB,IHC,ICC/IF	H	P61225,P10114,Q9Y3L5	21 kDa	Rabbit	IgG	100ul,200ul

Applications detail:

Application	Dilution
WB	1:1000-2000
IHC	1:100,
ICC/IF	1:100,
The optimal dilutions should be determined by the end user	

Conjugate:

UnConjugate

Form:

Liquid

sensitivity:

Endogenous

Purification:

Protein A purification

Specificity:

Antibody is produced by immunizing animals with a synthetic peptide of Human Rap2A+Rap2B+Rap2C.

Storage buffer and conditions:

Antibody store in 10 mM PBS, 0.5mg/ml BSA, 50% glycerol (buffer) .

Shipped at 4°C. Store at -20°C or -80°C.

Products are valid for one natural year of receipt.Avoid repeated freeze / thaw cycles.

Tissue specificity:

Expressed in liver, skeletal muscle, prostate, uterus, rectum, stomach, and bladder and to a lower extent in brain, kidney, pancreas, and bone marrow. Expressed in mononuclear leukocytes and

Subcellular location:

Cytoplasm. Recycling endosome membrane,Lipid-anchor,Cytoplasmic side.

Function:

Introduction: **WB:** Western Blot **IP:** Immunoprecipitation **IHC:** Immunohistochemistry **ChIP:** Chromatin Immunoprecipitation **ICC/IF:** Immunocytochemistry/Immunofluorescence **F:** Flow Cytometry

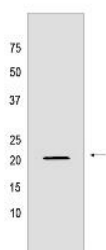
Cross Reactivity: **H:** human **M:** mouse **R:** rat **Hm:** hamster **Mk:** monkey **Vir:** virus **Ml:** mink **C:** chicken **Dm** D. melanogaster **X:** Xenopus **Z:** zebrafish **B:** bovine
Dg: dog **Pg:** pig **Hr:** horse

For Research Use Only. Not For Use In Diagnostic Procedures.

Small GTP-binding protein which cycles between a GDP-bound inactive and a GTP-bound active form. May play a role in cytoskeletal rearrangements and regulate cell spreading through activation of the effector TNIK. May play a role in SRE-mediated gene transcription..

Validation Data:

Rap2A+Rap2B+Rap2C Rabbit mAb [1X3F] Images



Western blot (SDS PAGE) analysis of extracts from MCF-7 cells lysates using Rap2A+Rap2B+Rap2C Rabbit mAb [1X3F] at dilution of 1:1000 incubated at 4°C over

View more information on <http://naturebios.com>

IMPORTANT: For western blots, incubate membrane with diluted primary antibody in 1% w/v Milk, 1X TBST at 4°C overnight.

For Research Use Only. Not For Use In Diagnostic Procedures.