

MRE11 Rabbit mAb[JY26]

Cat NO. :A52262

Information:

Applications	Reactivity:	UniProt ID:	MW(kDa)	Host	Isotype	Size
WB	H,M	P49959	81kDa	Rabbit	IgG	50ul 100ul,200ul

Applications detail:

Application	Dilution
WB	1:1000-2000
The optimal dilutions should be determined by the end user	

Conjugate:

UnConjugate

Form:

Liquid

sensitivity:

Endogenous

Purification:

Protein A purification

Specificity:

Antibody is produced by immunizing animals with a synthetic peptide of human MRE11.

Storage buffer and conditions:

Antibody store in 10 mM PBS, 0.5mg/ml BSA, 50% glycerol (buffer) .

Shipped at 4°C. Store at -20°C or -80°C.

Products are valid for one natural year of receipt.Avoid repeated freeze / thaw cycles.

Tissue specificity:

Subcellular location:

Nucleus. Chromosome, telomere. Chromosome.

Function:

Component of the MRN complex, which plays a central role in double-strand break (DSB) repair, DNA recombination, maintenance of telomere integrity and meiosis (PubMed:9651580, PubMed:9590181, PubMed:9705271, PubMed:11741547, PubMed:29670289). The complex possesses single-strand endonuclease activity and double-strand-specific 3'-5' exonuclease activity, which are provided by MRE11 (PubMed:9651580, PubMed:9590181, PubMed:9705271, PubMed:11741547, PubMed:29670289). RAD50 may be required to bind DNA ends and hold them in close proximity (PubMed:9651580, PubMed:9590181, PubMed:9705271, PubMed:11741547, PubMed:29670289). This could facilitate searches for short or long regions of sequence

Introduction: **WB:** Western Blot **IP:** Immunoprecipitation **IHC:** Immunohistochemistry **ChIP:** Chromatin Immunoprecipitation **ICC/IF:** Immunocytochemistry/Immunofluorescence **F:** Flow Cytometry

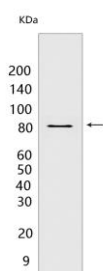
Cross Reactivity: **H:** human **M:** mouse **R:** rat **Hm:** hamster **Mk:** monkey **Vir:** virus **Mi:** mink **C:** chicken **Dm:** D. melanogaster **X:** Xenopus **Z:** zebrafish **B:** bovine **Dg:** dog **Pg:** pig **Hr:** horse

For Research Use Only. Not For Use In Diagnostic Procedures.

homology in the recombining DNA templates, and may also stimulate the activity of DNA ligases and/or restrict the nuclease activity of MRE11 to prevent nucleolytic degradation past a given point (PubMed:9651580, PubMed:9590181, PubMed:9705271, PubMed:11741547, PubMed:29670289, PubMed:30612738). The complex may also be required for DNA damage signaling via activation of the ATM kinase (PubMed:15064416). In telomeres the MRN complex may modulate t-loop formation (PubMed:10888888)..

Validation Data:

MRE11 Rabbit mAb[JY26] Images



Western blot (SDS PAGE) analysis of extracts from HeLa cells. Using MRE11 Rabbit mAb IgG [JY26] at dilution of 1:1000 incubated at 4°C over night.

View more information on <http://naturebios.com>

IMPORTANT: For western blots, incubate membrane with diluted primary antibody in 1% w/v Milk, 1X TBST at 4°C overnight.

For Research Use Only. Not For Use In Diagnostic Procedures.