

## Dynamin 1 Rabbit mAb [L42I]

Cat NO. :A28168

### Information:

Applications	Reactivity:	UniProt ID:	MW(kDa)	Host	Isotype	Size
WB,IHC	H,M,R	Q05193	97 kDa	Rabbit	IgG	100ul,200ul

### Applications detail:

Application	Dilution
WB	1:1000-2000
IHC	1:100
The optimal dilutions should be determined by the end user	

### Conjugate:

UnConjugate

### Form:

Liquid

### sensitivity:

Endogenous

### Purification:

Protein A purification

### Specificity:

Antibody is produced by immunizing animals with a synthetic peptide at the sequence of human Dynamin 1

### Storage buffer and conditions:

Antibody store in 10 mM PBS, 0.5mg/ml BSA, 50% glycerol (buffer) .

Shipped at 4°C. Store at -20°C or -80°C.

Products are valid for one natural year of receipt.Avoid repeated freeze / thaw cycles.

### Tissue specificity:

### Subcellular location:

Cytoplasm. Cytoplasm, cytoskeleton.

### Function:

Microtubule-associated force-producing protein involved in producing microtubule bundles and able to bind and hydrolyze GTP. Most probably involved in vesicular trafficking processes. Involved in receptor-mediated endocytosis.

**Introduction:** **WB:** Western Blot **IP:** Immunoprecipitation **IHC:** Immunohistochemistry **ChIP:** Chromatin Immunoprecipitation **ICC/IF:** Immunocytochemistry/Immunofluorescence **F:** Flow Cytometry

**Cross Reactivity:** **H:** human **M:** mouse **R:** rat **Hm:** hamster **Mk:** monkey **Vir:** virus **Mi:** mink **C:** chicken **Dm:** D. melanogaster **X:** Xenopus **Z:** zebrafish **B:** bovine **Dg:** dog **Pg:** pig **Hr:** horse

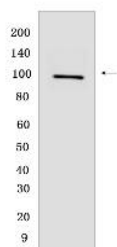
**For Research Use Only. Not For Use In Diagnostic Procedures.**

---

## Validation Data:

### Dynamin 1 Rabbit mAb [L42I] Images

---



Western blot (SDS PAGE) analysis of extracts from U-2 OS. Using Dynamin 1 Rabbit mAb [L42I] at dilution of 1:1000 incubated at 4°C over night.

View more information on <http://naturebios.com>

**IMPORTANT:** For western blots, incubate membrane with diluted primary antibody in 1% w/v Milk, 1X TBST at 4°C overnight.

For Research Use Only. Not For Use In Diagnostic Procedures.